



JUST THE FAX

1300 South 4th Street, Suite 250
502 / 636-9550

www.louhomeless.org

502 / 636-9950 fax

Louisville, Kentucky 40208
February 11, 2011

WE NEED YOUR HELP TO GET SB26, THE HOMELESS ID BILL BROUGHT UP IN THE JUDICIARY COMMITTEE!!!!

We now have two important action steps to help make the one year ID for homeless persons a reality. Before Tuesday of next week, please contact:

Senator David Williams, Senate District 16, or his
Chief of Staff, Becky Harilson at 502-564-3120.

And ask him to please ask the Judiciary Committee to hear SB26 as soon as possible. Meanwhile, if you haven't already, also contact Senator Jensen, Chair of the Senate Judiciary and ask him to please bring SB26 up on the agenda for the Judiciary Committee this week!!! The SB26 Talking Points are below.

THINGS ARE HAPPENING IN WASHINGTON THAT WE ALL FEARED WERE COMING!

HERE ARE FURTHER DETAILS ON THE CUTS AT THE FEDERAL LEVEL PROPOSED BY OUR OWN HAL ROGERS!

PASS THIS ALONG TO YOUR CONSTITUENTS AND MAKE CALLS TO THE KENTUCKY DELEGATION AND OTHER MEMBERS OF CONGRESS YOU MAY KNOW.

CR SPENDING CUTS TO GO DEEP February 9th, 2011 - - SEE ARTICLE BELOW

HOMELESS SUMMIT - PART TWO

On Monday, March 7, 2011, The U.S. Department of Housing and Urban Development and The Coalition for the Homeless will be sponsoring Homeless Summit - part two. This event will include a summit of community leaders in the morning working to coordinate services to serve the homeless. The afternoon will be an open event to outline changes in HUD and Continuum of Care priorities and to outline how Louisville leaders have agreed to work together toward these goals. This day's events will be held at the Metro United Way. **See the invitation below.**

STATEWIDE CASE MANAGEMENT CURRICULUM

Anyone interested in helping to create statewide on-line case management training, should attend the Kentucky Interagency Council on Homelessness Service Committee at KHC in the West Annex, April 12, 2011 at noon. The group will order pizza and work through lunch.

ATTACHMENTS WITH JUST THE FAX BELOW

- SOAR REGISTRATION FORM
 - SUMMIT INVITATION
- CR SPENDING CUTS TO GO DEEP
- BIKERS FOR BOYS & GIRLS HAVEN
 - TALKING POINTS
- Community Action Development Manager Opening

RIDER ALERTS SERVICE ADJUSTMENTS EFFECTIVE FEBRUARY 13, 2011

The following TARC service changes take effect February 13, 2011. These changes were based on a review of more than 150 comments received during a public comment period that included four public hearings. Proposed routing changes in some cases were altered based on public comment.

Below are details of the changes that will take effect Feb. 13th:

Route #2 Second Street - All trips will be rerouted south of Hill Street, to Preston Street, to Eastern Parkway, then to Crittenden Drive, connecting to the current Route #2. Bus frequency will be adjusted slightly because of the longer route. This rerouting will provide service on streets that are no longer part of Route #18-Preston-18th. (See below Route #18 changes).

Route #4 Fourth Street – All trips will provide direct service to and from downtown hospitals through Old Louisville, University of Louisville and Southern Louisville neighborhoods. Northbound trips will travel from Fifth Street then east on Market Street, south on First Street, east on Chestnut, north on Jackson Street and west on Jefferson Street. Route #4 will then go right on Seventh St. to Market St. then follow the existing route south on Sixth Street.

Route #6 Sixth Street – Mid-morning trips on weekdays will be adjusted by one or two minutes to provide better service. The southbound trip leaving Fourth and Main streets at 10:27 a.m. will now serve Sts. Mary and Elizabeth Hospital on Bluegrass Avenue. The northbound trip that currently leaves Iroquois Park at 1:51 p.m. will instead begin at Newcut Market Center on the

Outer Loop at 1:39 p.m.

Route #18 Preston-18th – Route #18 will be realigned to serve the University of Louisville Belknap Campus along Floyd Street and will no longer serve Shelby and Preston Streets between Hill Street and Eastern Parkway. However, Route #2-Second Street is being rerouted to provide service on those streets (see above Route #2 changes). Trips operating north on Dixie Highway through Shively will serve a handicap-accessible stop on 7th Street Road adjacent to Southland Terrace Shopping Center. Federal grant funding will increase frequency in bus arrival times on Route #18.

Route # 19 Muhammad Ali - There will be slight time adjustments on all trips all days. There will no longer be a stop on Chestnut at Fourth Street.

Route #21 Chestnut Street - There will be slight time adjustments on all trips on all days. There will no longer be a stop on Chestnut at Fourth Street. The following trips will serve the Gardiner Lane post office: 6:04 a.m., 10:33 a.m., 1:33 p.m., 3:48 p.m. and 5:48 p.m.

Route #23 Broadway - There will be time adjustments on most trips as a result of federal grant funding to increase frequency in service.

Route #27 Hill Street - Will still continue to serve Audubon Hospital and Poplar Level Road and will be extended to serve Kroger on 35th Street near Bank Street.

Route #43 Portland-Poplar Level - Will be extended to serve Kroger on 35th Street near Bank Street.

For more information call TARC Customer Service at 585-1234, TTY 213-3240 or visit www.ridetarc.org. [Click here if you prefer a PDF version of the maps.](#)

SOAR TRAINING, MARCH 23-24, 2011

Would you like to learn how to assist your clients in applying for Social Security Disability?
Are you confused about the process of application for SSI or SSDI?
Would you like to increase success in your applications?
Come to the next SOAR (SSI/SSDI, Outreach, Access and Recovery) Training Workshop
Hotel Louisville, 2nd Floor, Ballroom A
Corner of 2nd and Broadway
9:00 – 4:00 each day

See registration form below for details

BIKERS FOR BOYS' & GIRLS' HAVEN

Boys' and Girl's Haven houses abused and neglected youth ages 12-21 that have been removed from their homes and are now wards of the state of Kentucky. The goal is to help these youth form healthy attachments and teach them the life skills needed to live independently. Due to state and federal budget cuts programs like ours are disappearing despite Kentucky having more youth in the states custody than any other state in the country. In order to raise awareness and monies to help keep our programs running we will be holding our first motorcycle/ATV show on June 25th at Bowman Airfield in the hanger. Please take a look at the attached flyer and post at your place of business if able. We are also looking for donations for raffle at the event and have received a lot of items including signed celebrity memorabilia. We are in need of some big ticket items as well. Thank you for your time and support and hope to see you all there! See full color flyer below.

Crystal Bradley BA
Program Supervisor
Independent Living Team
Boys' and Girls' Haven
Office: (502) 458-1171
cbradley@boyshaven.org

SOAR - SSDI OUTREACH, ACCESS, AND RECOVERY)

Have you attended a SOAR training but are having problems getting started with your first SSI/SSDI application?

- Do you have questions about the process?
- Do you need answers from Social Security or DDS people?
- Do you need help doing the Medical Summary and Functional Report?

If you responded "yes" to even ONE of these questions, we invite you to our monthly SOAR Planning Committee meetings held every second Thursday of the month (11 a.m. – 12 p.m.). The next meeting will be held on February 10, 2011 at the Seven Counties building located at 2650 West Broadway behind the Kroger Shopping Center, in the back near the Laundromat. It is a small, off-white 1-story building. If you get lost, call 589-8723. See you there!

SAVE THE DATE FOR RAISIN' THE RENT

The holidays are here and it won't be long until 2011 is upon us. That's why it is important to mark Feb. 26 on your calendar. Our largest annual fundraiser, **Raisin' the Rent**, will be held on that date at The Olmsted, 3701 Frankfort Avenue, from 7-11 p.m. Tickets are for \$25 each. Sponsorships are available. It will be an evening of fun, food, friends, silent and live auctions, music, dancing and games of chance. Get all the latest information about this important St. John Center event on our website, stjohncenter.org or on Facebook.



THE LOUISVILLE METRO DEPARTMENT OF PUBLIC HEALTH AND WELLNESS in conjunction with the Kentucky Department for Public Health and OPC Pest Control will be offering Bed Bug Training On

February 15th, 2011
9 am – 4pm
Memorial Auditorium Ballroom
970 South 4th Street

There will be four sessions; you may sign up for all or any combination. All sessions will cover basic biology and identification and will focus on the following topics:

- 9:00 am Prevention Strategies Ann Wethington Public Health and Wellness
- 10:30 am NPMA Best Management Practices Donnie Blake OPC Pest Control
- 1:00 pm Home visits, Schools, Daycares Matt Vanderpool Public Health and Wellness
- 2:30 pm Housing & Hospitality Jessica Davenport KY Dept of Health and Human Services

There is no cost. Please submit your name, company / agency, phone number, email address and session you wish to attend to

Beverly Strain
Beverly.strain@louisvilleky.gov
574-6623 phone
574-6657 fax

LOUISVILLE METRO HUMAN RELATIONS COMMISSION'S

The Homeless and Housing Coalition of Kentucky has scheduled a legislative luncheon for February 16, 2011 at the Capital Annex Cafeteria in Frankfort at 11:30 a.m. All Coalition for the Homeless members are invited to join this luncheon meeting to meet with legislators to support the homeless ID bill BR78 or other legislation of interest to you. To find out more, contact Penny Young at 502-223-18.

MENTAL HEALTH SUBSTANCE ABUSE MEETING

The Mental Health Substance Abuse Meeting will be March 8, 2011 beginning at 11:30 am. The topic will be "Eating Disorders." Everyone is welcome. Please RSVP by e-mail to pams@thehealingplace.org.

Women's Healing Place
1503 S 15th Street

Upcoming Meetings

Board of Directors	March 18, 2011	8:00 a.m.
Executive Board	April 20, 2011	8:00 a.m.
Service Provider, CWF	March 8, 2011	9:30 a.m.
Continuum of Care, MUW	March 7, 2011	3:30 p.m.

THE COALITION FOR THE HOMELESS STAFF

Natalie Harris , Executive Director	nharris@louhomeless.org
Pat Facktor , Continuum of Care Assistant	Pfacktor@louhomeless.org
Roman Vodacek , HMIS Coordinator	rvodacek@louhomeless.org
Marsha Bailey , Office Manager	mbailey@louhomeless.org
Merritt Gill , HMIS Assistant / HMIS Assistant	mgill@louhomeless.org
Senlin Ward , Assessment & Agency Resource Coordinator	sward@louhomeless.org
Becki Winchel , Development/Community Relations Manager	bwinchel@louhomeless.org
Mary Frances Schafer , Director of Community Coordination	mfschafer@louhomeless.org

ATTACHMENTS WITH JUST THE FAX



The U.S. Department of Housing and Urban Development, Louisville Office and The Coalition for the Homeless would like to invite you to join in an upcoming training –
Community Solutions to Homelessness in Metro Louisville

This local training event will be based on the national HEARTH trainings held in late 2010 and will be led by consulting firm ICF International. The agenda will include a synopsis of the upcoming changes to federal homeless programs to take place through the Hearth Act, discussions of new expectations and objectives, and planning for future partnerships and programs. We will also have the opportunity to hear what local leaders are doing to try to address these national objectives.

Please join us at the Metro United Way, 334 E. Broadway at 1:00 on March 7, 2011. RSVP to Natalie Harris at nharris@louhomeless.org or 636-9550, extension 11 to let us know if you can attend. If your attendance is not possible, we hope you can send a representative to share your ideas and hear about things to come.

Sincerely,

Krista Mills, Field Office Director
U.S. Department of Housing and Urban Development

Natalie Harris
The Coalition for the Homeless

SB 26 Talking Points

A government-issued identification card has become a requirement for many aspects of daily life. Whether starting a new job, searching for housing, accessing needed benefits, opening a bank account or availing oneself of court services such as emergency protective orders--so many activities now require official, government-issued proof of identity. Most individuals experiencing homelessness, however, find themselves unable to afford even this most basic tool of everyday living.

What does SB 26 do?

Reduces the fee from \$12 to \$4 for a person who does not have a fixed, permanent address; and changes the timeframe of validity from four years to one year, making the reduction in fee budget-neutral.

What does SB 26 NOT do?

SB 26 does NOT change current language regarding the number or types of documentation required to verify U.S. citizenship and residency.

SB 26 does NOT change the format or appearance of the ID for this population.

How does SB 26 help?

It helps homeless individuals and families—many with children—begin the journey back to self-sufficiency. The 2010 one-day count of homeless persons identified 6,623 homeless individuals across the state. During SFY 2010, almost 24,000 individuals were served by an emergency shelter and transitional housing program.

It helps homeless veterans. The above-mentioned count identified 156 homeless veterans; this number does not include Jefferson or Fayette Counties. Statewide estimates range from 800 to 1,200 on any given night (KY Department of Veterans Affairs).

It helps homeless survivors of domestic violence who may have fled without personal belongings. The one-day count of homeless persons identified almost 600 homeless survivors of domestic violence across Kentucky (minus Jefferson and Fayette Counties). A similar one-day census of all domestic violence survivors identified about 1,300 statewide.

It helps non-profit agencies serving homeless persons. These agencies, many of which operate on shoestring budgets, are currently spending a portion of their limited resources on identification cards for their clientele—resources that can be better used for other pressing needs such as food, clothing and medication.

Who supports SB 26?

In addition to a wide array of agencies serving the homeless population, this bill is supported by the following:

*Kentucky Association of Circuit Court Clerks
Kentucky Department of Veterans Affairs
Transportation Cabinet
Kentucky Domestic Violence Association
Kentucky Housing Corporation*

*Kentucky Interagency Council on Homelessness
Cabinet for Health and Family Services
Homeless and Housing Coalition of Kentucky
(2 organizations pending as of 1/24/2011)*

CR Spending Cuts to Go Deep

WASHINGTON, D.C. – House Appropriations Chairman Hal Rogers today announced a partial list of 70 spending cuts that will be included in an upcoming Continuing Resolution (CR) bill. The CR legislation will fund the federal government for the seven months remaining in the fiscal year and prevent a government wide shut-down, while significantly reducing the massive increases in discretionary spending enacted in the last several years by a Democrat majority. A full list of program cuts will be released when the bill is formally introduced.

The total spending cuts in the CR will exceed \$74 billion, including \$58 billion in non-security discretionary spending reductions. The statement by Chairman Rogers on these cuts follows:

“Never before has Congress undertaken a task of this magnitude. The cuts in this CR will represent the largest reduction in discretionary spending in the history of our nation.

“While making these cuts is hard, we have a unique opportunity to right our fiscal ship and begin to reduce our massive deficits and debt. We have taken a wire brush to the discretionary budget and scoured every program to find real savings that are responsible and justifiable to the American people.

“Make no mistake, these cuts are not low-hanging fruit. These cuts are real and will impact every District across the country - including my own. As I have often said, every dollar we cut has a constituency, an industry, an association, and individual citizens who will disagree with us. But with this CR, we will respond to the millions of Americans who have called on this Congress to rein in spending to help our economy grow and our businesses create jobs.”

The List of 70 Spending Cuts to be Included in the CR follows:

- Flood Control and Coastal Emergencies -\$30M
- Energy Efficiency and Renewable Energy -\$899M
- Electricity Delivery and Energy Reliability -\$49M
- Nuclear Energy -\$169M
- Fossil Energy Research -\$31M
- Clean Coal Technology -\$18M
- Strategic Petroleum Reserve -\$15M
- Energy Information Administration -\$34M
- Office of Science -\$1.1B
- Power Marketing Administrations -\$52M
- Department of Treasury -\$268M
- Internal Revenue Service -\$593M
- Treasury Forfeiture Fund -\$338M
- GSA Federal Buildings Fund -\$1.7B
- ONDCP -\$69M
- International Trade Administration -\$93M
- Economic Development Assistance -\$16M
- Minority Business Development Agency -\$2M
- National Institute of Standards and Technology -\$186M
- NOAA -\$336M
- National Drug Intelligence Center -\$11M
- Law Enforcement Wireless Communications -\$52M
- US Marshals Service -\$10M

- FBI -\$74M
- State and Local Law Enforcement Assistance -\$256M
- Juvenile Justice -\$2.3M
- COPS -\$600M
- NASA -\$379M
- NSF -\$139M
- Legal Services Corporation -\$75M
- EPA -\$1.6B
- Food Safety and Inspection Services -\$53M
- Farm Service Agency -\$201M
- Agriculture Research -\$246M
- Natural Resource Conservation Service -\$46M
- Rural Development Programs -\$237M
- WIC -\$758M
- International Food Aid grants -\$544M
- FDA -\$220M
- Land and Water Conservation Fund -\$348M
- National Archives and Record Service -\$20M
- DOE Loan Guarantee Authority -\$1.4B
- EPA ENERGY STAR -\$7.4M
- EPA GHG Reporting Registry -\$9M
- USGS -\$27M
- EPA Cap and Trade Technical Assistance -\$5M
- EPA State and Local Air Quality Management -\$25M
- Fish and Wildlife Service -\$72M
- Smithsonian -\$7.3M
- National Park Service -\$51M
- Clean Water State Revolving Fund -\$700M
- Drinking Water State Revolving Fund -\$250M
- EPA Brownfields -\$48M
- Forest Service -\$38M
- National Endowment for the Arts -\$6M
- National Endowment for the Humanities -\$6M
- Job Training Programs -\$2B
- Community Health Centers -\$1.3B
- Maternal and Child Health Block Grants -\$210M
- Family Planning -\$327M
- Poison Control Centers -\$27M
- CDC -\$755M
- NIH -\$1B
- Substance Abuse and Mental Health Services -\$96M
- LIHEAP Contingency fund -\$400M
- Community Services Block Grant -\$405M
- High Speed Rail -\$1B
- FAA Next Gen -\$234M
- Amtrak -\$224M
- HUD Community Development Fund -\$530M

(All reductions are compared to the President's fiscal year 2011 request)

Contact: Jennifer Hing, 202-226-7007



SOAR Training

SSI/SSDI Outreach, Access, and Recovery

Sponsored by Kentucky Housing Corporation
and the Division of Mental Health and Substance Abuse

Save the Date! March 23-24, 2011

Assisting People Applying for SSI/SSDI Disability Benefits

Workshop Highlights

- An in-depth, step-by-step explanation of the SSI/SSDI application and disability determination process
- Strategies for working with homeless persons with serious mental illness and co-occurring disorders – only a fraction of this population receives the benefits to which they are entitled
- Exercises and worksheets provide practical application tools
- Release-of-information samples, sample reports, letters, assessment forms, SSA forms with explanations

Featured Trainers

Janice Downs
Phoenix Health Center

Garry Jones
Family and Children Place

Workshop Location

Hotel Louisville
2nd Floor, Ballroom A
120 W Broadway
Louisville, KY 40202
502-582-2241

Dates & Times

March 23-24, 2011
9:00 a.m. to 4:00 p.m.
Attendance both days is required
(Lunch is on your own)

How is this model different?

- Case managers actively assist applicants
- Focuses on the initial application – “Get it right the first time!”
- Avoids appeals whenever possible
- Focuses on documenting the disability to reduce the need for consultative exams
- Leads to savings – the San Francisco Department of Public Health estimates that their SSI outreach project saves the city \$27 million annually in recouped Medicaid and state-funded General Assistance alone

Registration Please complete attached registration form. Conference is free to Kentucky residents. Hotel, meals, and transportation costs are the responsibility of the participant.

Assisting People Applying for SSI/SSDI Disability Benefits

Registration Form

March 23-24, 2011
Hotel Louisville, 2nd Floor, Ballroom A
120 W Broadway, Louisville, KY
502-582-2241

This completed registration form must be returned by
March 1, 2011

One registration per person

Registrant Information:

First Name: _____ Last Name: _____

Title: _____

Organization Name: _____

Street Address: _____

City: _____ State: _____ Zip: _____

Phone: (____) _____ Fax: (____) _____

E-mail: _____

Please indicate if you need special accommodations (ADA) _____

**PLEASE PLAN ON ATTENDING BOTH DAYS FOR THE ENTIRE TIME. THE
TRAINING ASSUMES ATTENDANCE AT THE ENTIRE EVENT**

If you have any questions, call Richard McClain at (502) 564 -7630 ext 388
or e-mail rmclain@kyhousing.org

Return this registration form by March 1, 2011 to
Richard McClain, KHC, via fax at (502) 564 – 6173

**Community Action Council
For
Lexington-Fayette, Bourbon, Harrison and Nicholas Counties**

POSITION DESCRIPTION

Functional Title: Development Manager

Operational Title: Development Manager

Reporting and Working Relationship: Reports to the Manager, Program Development.

Revision Date: N/A

Job Function Statement: (overall job purpose and benefit to the operation)

Position manages and coordinates all private fund-raising for Council priorities. Works closely with senior managers to utilize strategic and annual plans for prioritizing funding opportunities. Identifies opportunities and manages solicitations for funding from individuals, corporations and foundations. Leads planning and implementation of all fund-raising activities and events to meet annual development goals, including annual giving and planned giving.

Major Tasks: (Specify tasks: what, when, how often, differentiate essential and secondary job functions)

1. Coordinates the development and implementation of an annual fund-raising plan in collaboration with Council management staff. (E)
2. Implements fundraising plans, particularly taking the lead in growing and engaging the donor base, by coordinating personal contacts, public presentations, and leveraging the networks of Board members, staff, volunteers, past donors and other friends of the Council.(E)
3. Maintains current knowledge and understanding of philanthropic interests of individuals, corporations and foundations, acquired through regular contact.(E)
4. Maintains ongoing relationships with donors and potential donors and helps them fulfill their philanthropic goals through the Council.(E)
5. Supports and guides the efforts of the Manager, Program Development, Executive Director, and the Strategic Leadership Group.(E)
6. Works with the Executive Director and selected members of the Strategic Leadership Group in identifying and meeting with prospective donors.(E)
7. Ensures the effective administration and tracking of gifts and maintenance of donor records. This includes carrying out procedures for maintaining donor database, acknowledging gifts, providing recognition to donors, maintaining accurate fund files, and ensuring that appropriate persons receive reports and communications such as fund statements and pledge reminders.(E)

8. Works collaboratively with the External Communications Specialist in the development of printed materials and marketing that supports the fund development initiatives. (E)
9. Develops, implements and ensures attainment of annual fund development goals. (E)
10. Closely follows local and national media (newspapers, TV, blogs, etc.) to stay current on matters impacting the Council and its programs. (E)
11. Stays informed at a high level on the Council's programs and projects to ensure fund-raising needs are being represented. (E)
12. Plans, organizes and implements fund-raising events/activities, including identification and solicitation of sponsors.(E)
13. Either alone or with Council staff and/or Board members approaches individuals, corporate, and foundation officials in order to solicit support for the Council.
14. Counsels and provides technical assistance to Council staff and Board members on matters related to private giving. (E)
15. Responds verbally and in writing to questions from current or potential donors, working with appropriate Council staff members to ensure donor needs are met. (E)
16. Works closely with Volunteer Resources Manager to integrate volunteers in fund-raising activities. (S)
17. Participates in agency work groups. (S)
18. Maintains open lines of communication with the Manager, Program Development. (S)
19. Performs other duties as assigned. (S)

Job Qualifications:

Knowledge, skills, experience, education, abilities:

1. A Bachelor's degree in Business Administration, Communications, Journalism, Marketing, Social Work or a related degree.
2. Five years experience in fundraising and event planning.
3. Experience utilizing Sage fund-raising software or similar fund-raising software such as Raiser's Edge.

Licenses, certifications:

1. Valid Kentucky driver's license
2. Any other screening, physicals and testing required by funding source, licensing and/or regulations.

Physical and mental requirements:

1. Leadership and interpersonal skills
2. Organizational skills
3. Written and oral communication skills
4. Must possess working knowledge of low-income people and older persons and demonstrate sensitivity to the needs of low-income people and older persons

- Should be computer literate and have experience with word processing and spreadsheet software.

Tools and equipment:

- Personal computer
- Cell phone
- Access to standard office equipment
- Must have reliable transportation and be willing to use for the Council's business

Work Environment:

- Council maintains a smoke free environment in the work place.
- Work site layout: Administrative office
- Safety and hazards: Staff identification badge is to be worn while in Council facilities.

Attendance and other work requirements:

- Work schedule: Flexible to meet program needs
- Travel: Requires regular travel in local service area, with occasional out of area travel.
- Overtime: Exempt
- Training: As required by funding sources and the Council.

Schedule: C-1991-H, Change 22

Grade: 9

Classifications:

Permanent
 Part Time

Temporary
 Exempt

Full Time
 Non-exempt

Approvals:

Date:

EEO: _____

Fiscal: _____

Exec. Dir: _____



Get Your Motor Running

It's Bikers For Boys & Girls Haven!



Bikes, Food, Beer, Live Bands, & Raffles
(Including signed celebrity memorabilia)

\$15 adult admission prior to the event at boyshaven.org or \$20 at the door. \$5 child admission (ages 2-12) prior to the event or \$10 at the door. Children 2 and under free.

June 25, 2011
10:00am - 10:00pm
Bowman Air Field Hangar
2700 Gast Boulevard
Louisville, Kentucky

No patches or colors allowed

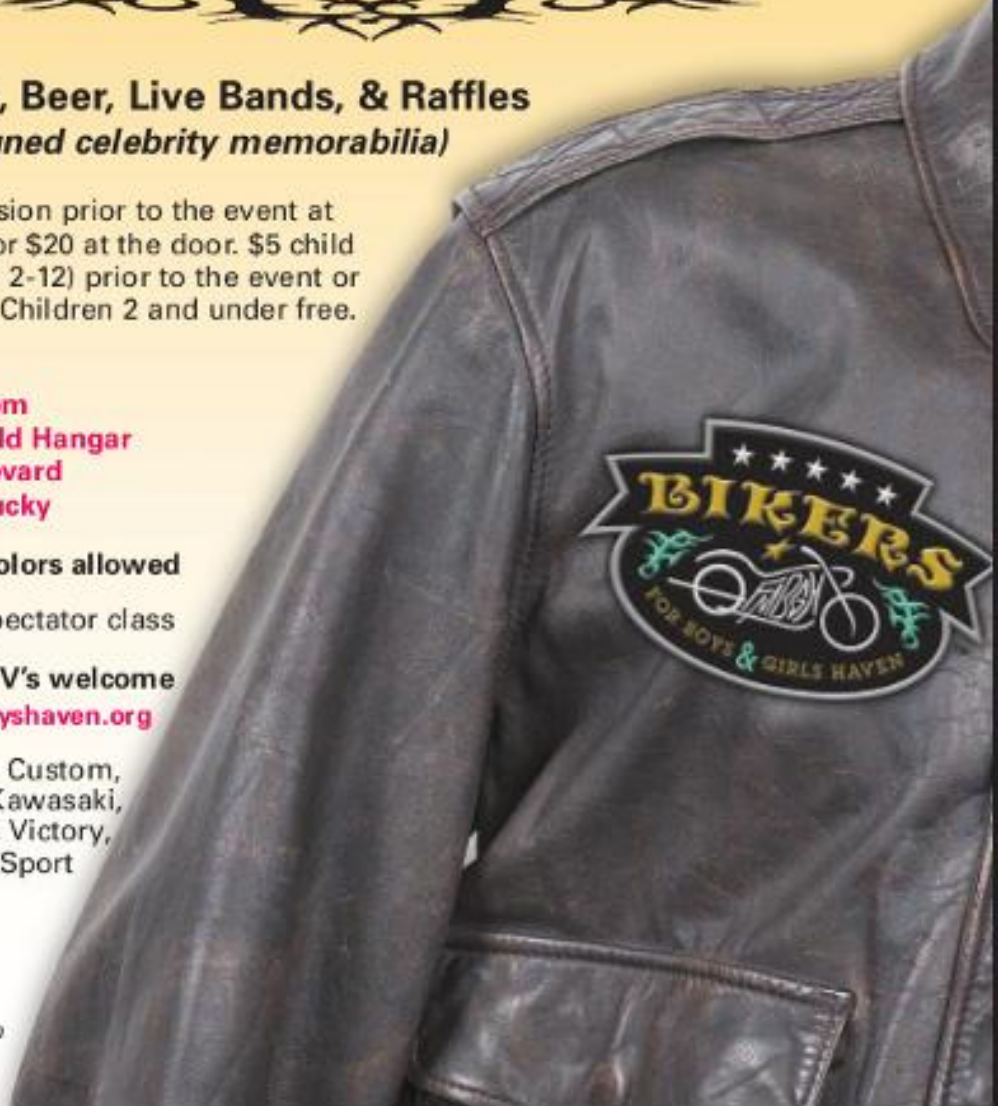
Judged class, spectator class

All bikes and ATV's welcome

Enter @ www.boyshaven.org

Stock, Modified, Custom,
Harley, Honda, Kawasaki,
Yamaha, Suzuki, Victory,
Triumph, BMW, Sport
bikes, & ATV's.

*All proceeds go to
directly benefit the
youth served by
Boys and Girls Haven*



For more information or questions, please call 502.356.4900